

MONTHLY MEMBERSHIP PROGRESS REPORT

LOCATION TEXAS

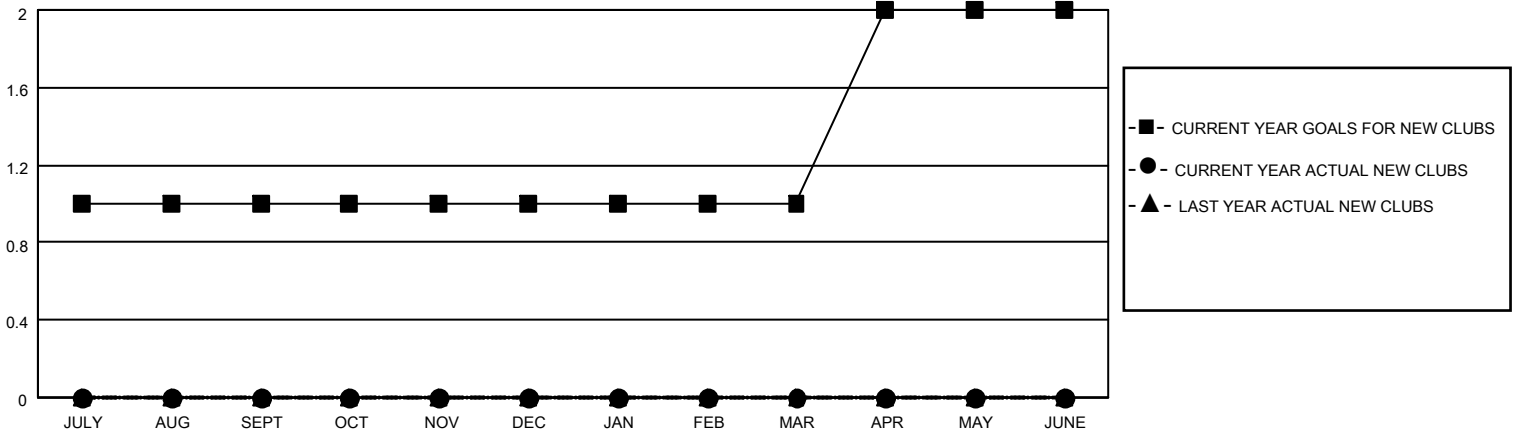
District 2 S5

Results as of: 5/31/2022

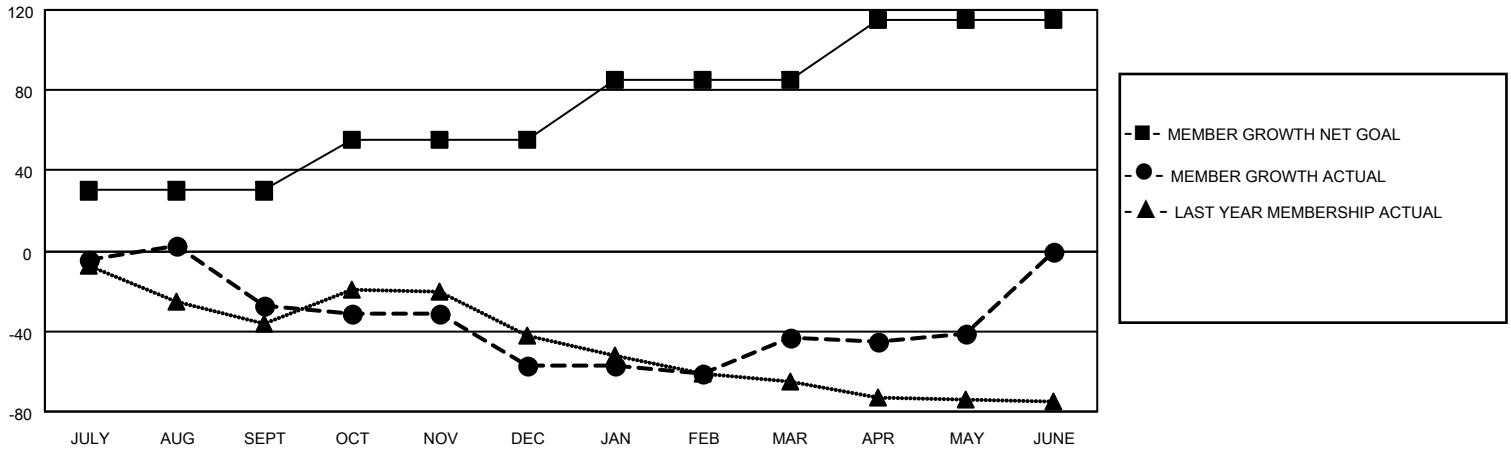
Clubs			
RESULTS FOR 2021-2022			
QUARTER	NEW CLUB GOAL	NEW CLUBS	DROPPED CLUBS
JULY/AUG/SEPT	1	0	2
OCT/NOV/DEC	0	0	1
JAN/FEB/MAR	0	0	1
APR/MAY/JUNE	1	0	0

Members			
RESULTS FOR 2021-2022			
QUARTER	MEMBER GROWTH NET GOAL	MEMBER GROWTH ACTUAL	DROPPED MEMBERS ACTUAL (including transfers)
JULY/AUG/SEPT	30	73	89
OCT/NOV/DEC	25	75	96
JAN/FEB/MAR	30	80	61
APR/MAY/JUNE	30	48	42

GOALS AND ACTUAL NEW CLUBS CUMULATIVE



GOALS AND ACTUAL MEMBERS CUMULATIVE



DROPPED CLUBS: 4	
<u>DROPPED MEMBERS</u>	
DECEASED	26
CLUB CANCELLED	29
OTHER	233
TOTAL	288

38 CLUBS OF 59 ADDED 1 OR MORE NEW MEMBERS

[CLICK HERE FOR CUMULATIVE MEMBERSHIP DATA](#)

<u>GENDER DISTRIBUTION</u>	
MALE	1,352 (59.40%)
FEMALE	924 (40.60%)
NON BINARY	0 (0.00%)
PREFER NOT TO ANSWER	0 (0.00%)
TOTAL FAMILY UNIT MEMBERS	406
FAMILY MEMBERS PAYING HALF DUES	206